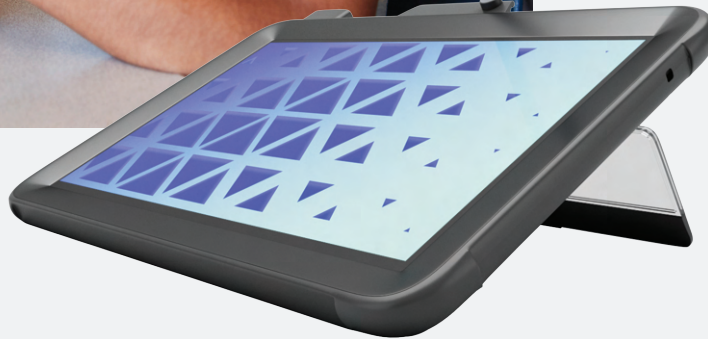




Custom fit for the Wacom One 12 Tablet



The Shield Extreme-X2 provides custom-fit protection for the 11.6" Wacom One 12 tablet, plus customizable viewing positions. The rugged design features dual layers of tough TPU for outstanding impact and drop protection, combining a cushioning inner layer with an oil- and dirt-resistant outer layer. The virtually break-proof and patented FlexStand kickstand provides unlimited, stable positioning options thanks to the easy-sliding friction hinge. The perfect-fit design delivers easy access to all ports, openings, and buttons. Durable corner anchors make it easy to add an (optional) hand strap, shoulder strap or any clip-on accessory.

# Shield Extreme-X2 for Wacom One 12 Tablet

Rugged protection plus unlimited viewing angles

# Shield Extreme-X2 for Wacom One 12 Tablet

Rugged protection plus unlimited viewing angles

## KEY FEATURES

- Custom-fit design for the 11.6" Wacom One 12 tablet
- Friction-hinge FlexStand kickstand smoothly slides into unlimited viewing angles, holds securely in place, and is virtually break-proof
- Dual layers of tough TPU deliver outstanding impact and drop protection with a cushioning inner layer and an oil- and dirt-resistant exterior
- Rigid and clear scratch-resistant back panel
- Precision-fit access to all ports and functions
- Durable corner anchors enable easy add-on of (optional) shoulder strap or hand strap
- Clear visibility to asset tags
- Custom colors, logos and MAXProtec antibacterial upgrade available with minimum quantity of 500 (additional fees apply)

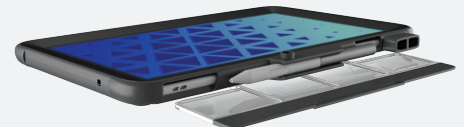
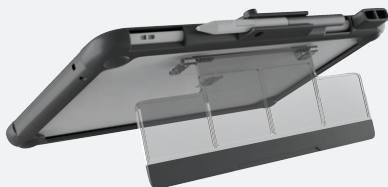
DESIGNED FOR WACOM ONE 12 TABLET 11.6"

WCSXX212BLK

SHIELD EXTREME-X2 FOR WACOM ONE 12 TABLET  
11.6" DISPLAY



Smooth friction-hinge kickstand delivers  
unlimited positioning options



[www.maxcases.com](http://www.maxcases.com)

US

(888) 799-6837

[sales@maxcases.com](mailto:sales@maxcases.com)

UK/EU

+44 151 909 3980

[sales@max-cases.co.uk](mailto:sales@max-cases.co.uk)